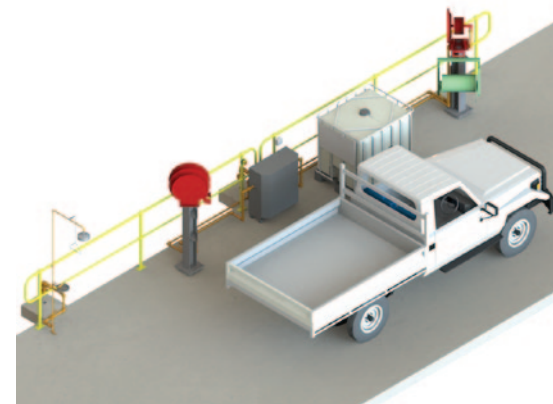
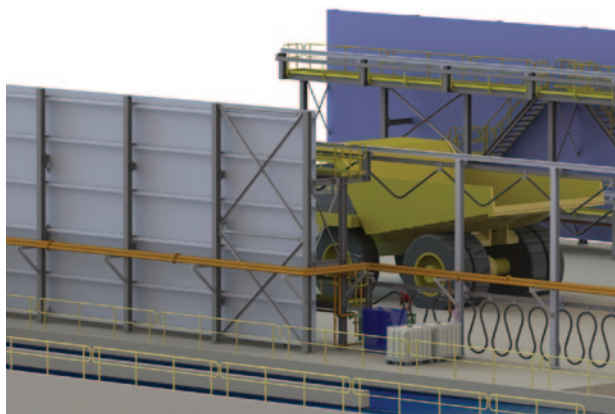
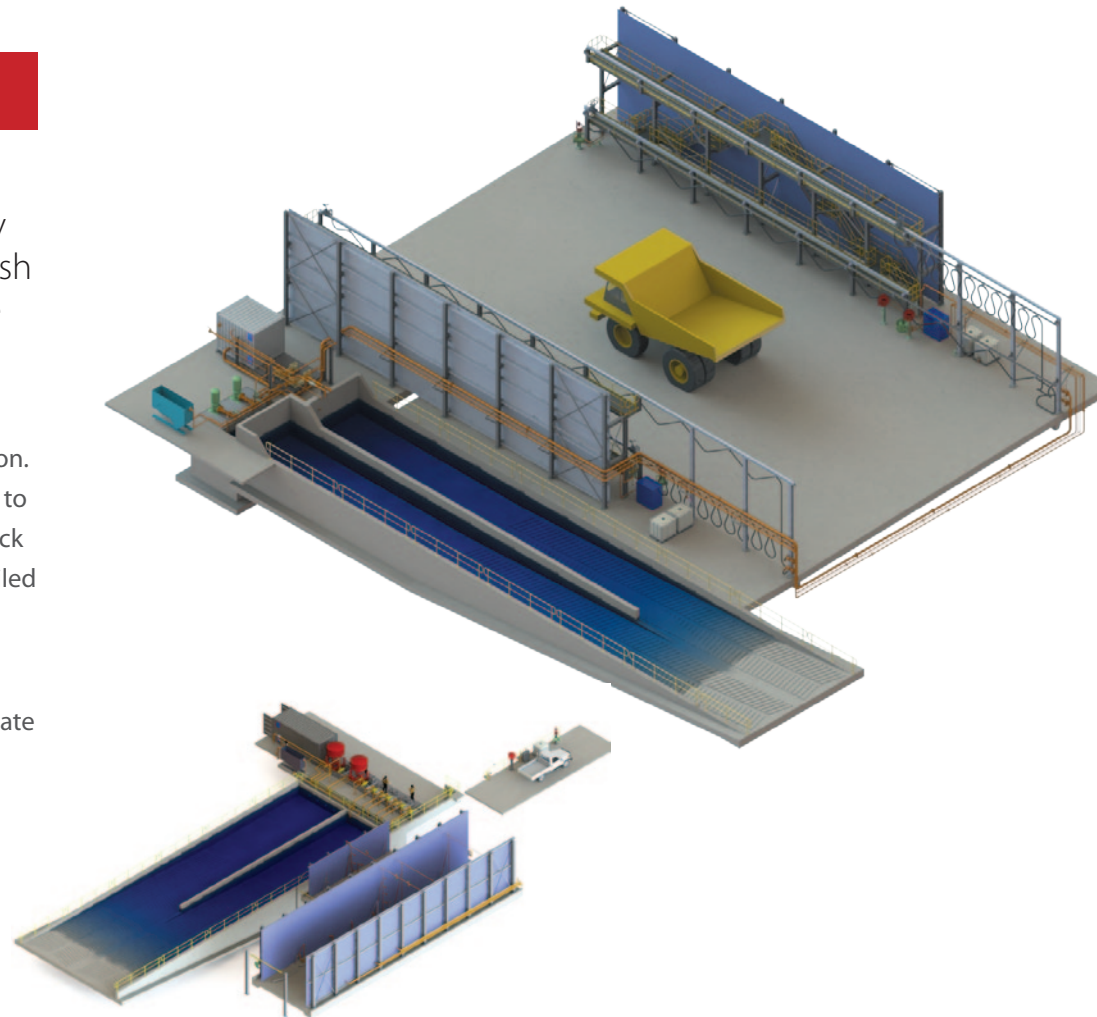


## Mining Vehicle Wash Plants

Quadro Design is working with a large Australian vehicle wash plant company on a number of mining equipment wash plants that are site specific to meet the particular needs of the mine site.

The first part of the project is to prepare concept models and drawings centred on the site specification. Upon award of the project, the design is 'fine-tuned' to suit individual equipment specifications and feedback from the client's review, before producing fully detailed fabrication drawings.

The two projects shown are for a stand-alone heavy wash plant for the large mining vehicles and a separate stand-alone medium and light vehicle wash plant.



For all enquiries:

Quadro Design Pty Ltd

P +61 8 9358 4200

E [quadro@quadro-design.com](mailto:quadro@quadro-design.com)

[www.quadro-design.com](http://www.quadro-design.com)

