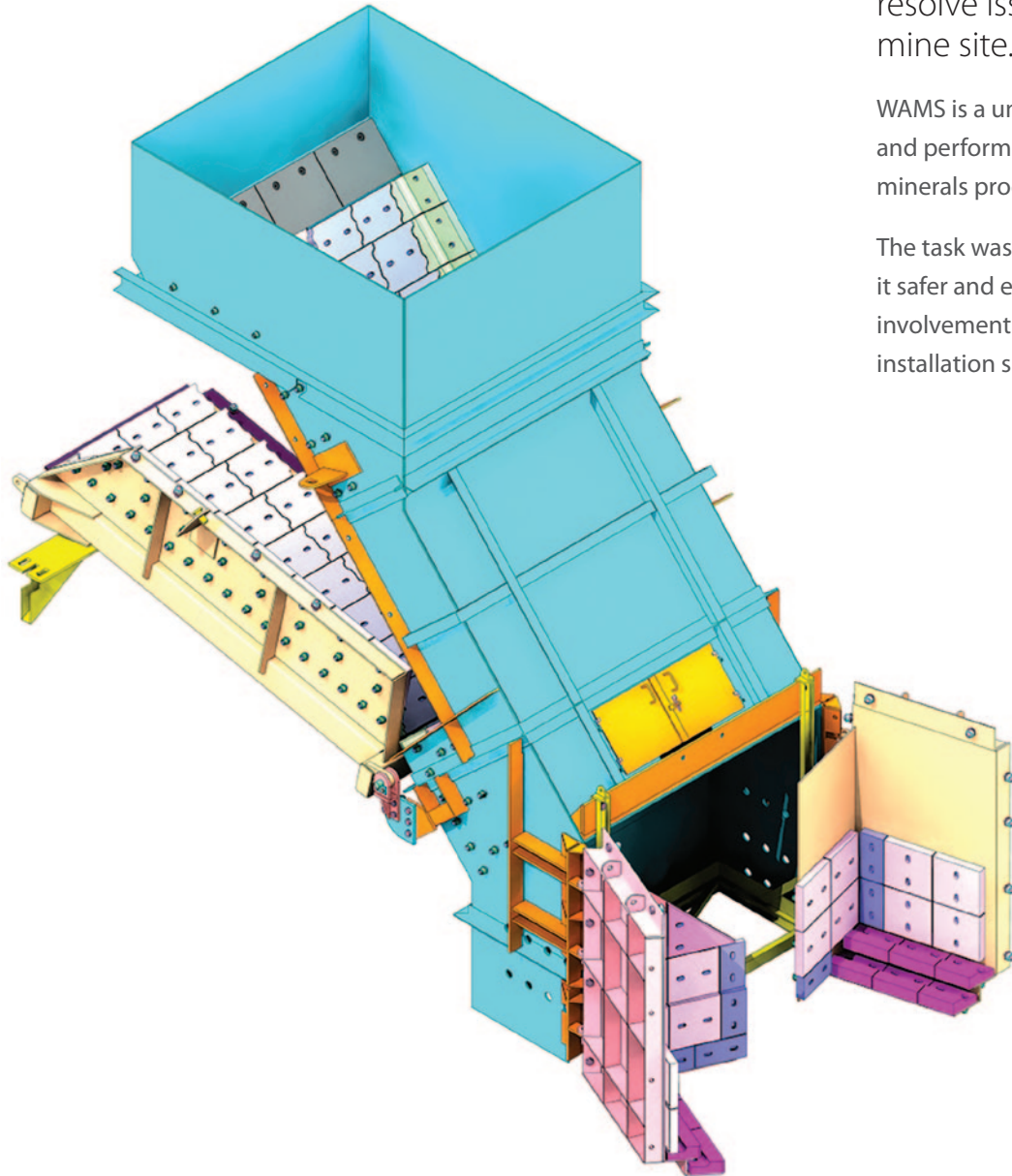


Tripper Chute



Quadro worked in conjunction with WAMS Pty Ltd to resolve issues with a Tripper chute at the Paraburdoo mine site.

WAMS is a uniquely experienced supplier of wear protection systems and performance management services to the mining, quarrying and minerals processing industries.

The task was to overcome liner joint washout problems and make it safer and easier for the maintenance crew on-site. Our scope of involvement ran from conception of the solution through to the installation supervision on-site.

Concept problems that were overcome:

Hazard reduction

Originally, maintenance required a 'Confined Space Permit' for replacing any of the internal chute liners, plus the access to replace liners was difficult.

Time saved

Reduction of time required to do liner maintenance/replacement.

Safety issues

Difficult access to the sloping wear faces for liner replacement, which previously required scaffolding, is no longer an issue.

Economics

Material specification and design interlocking liner design increased time between replacement. Working in consultation with specialist third parties has seen positive outcomes and on-going work with Rio Tinto and WAMS to solve other chute issues.

For all enquiries:

Quadro Design Pty Ltd

P +61 8 9358 4200

E quadro@quadro-design.com

www.quadro-design.com

